

Plotted By: Villalon, Teresa Sheet: Set: ANIE ADDERLY GILLIS PARKING LOT Layout: CS10 PAVING, GRADING AND DRAINAGE DETAILS - August 15, 2025 03:34:19pm K:\VTL-Civil\040 Jobs\04095115 E-20-20 CRA WA#1 Gillis Parking Lot\Design\040\PlanSheets\CS10 PAVING, GRADING AND DRAINAGE DETAILS.dwg
This document, together with the concepts and designs presented herein, is intended only for the specific purpose and client for which it was prepared. Reuse of and improper reliance on this document without written authorization and adaptation by Kimley-Horn and Associates, Inc. shall be without liability to Kimley-Horn and Associates, Inc.

DRAINAGE NOTES:

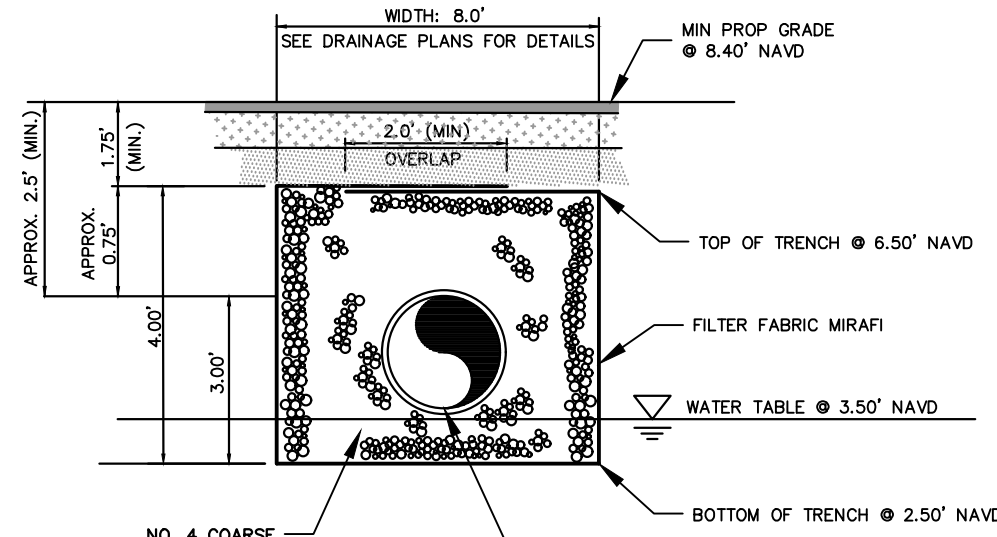
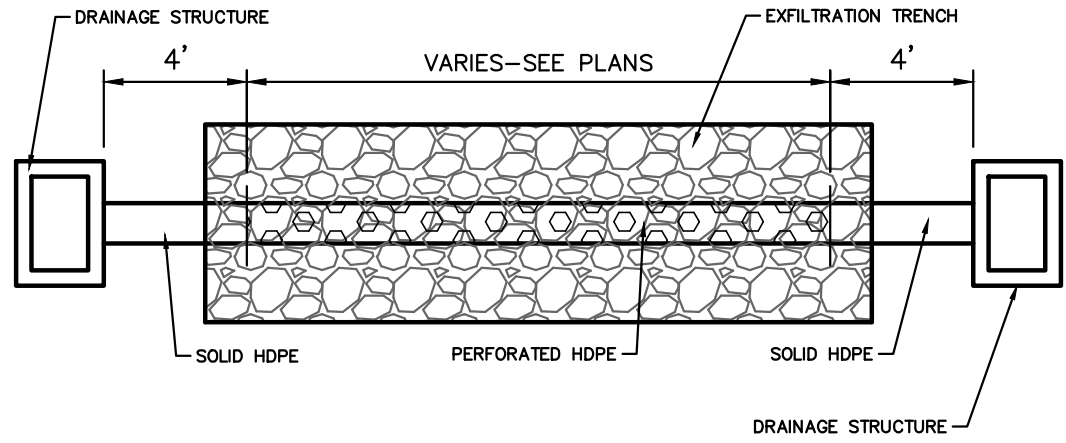
- ALL CATCH BASINS AND DRAINAGE COLLECTION STRUCTURES SHALL BE DESIGNED WITH AN EIGHTEEN INCH (18") VERTICAL SUMP FROM THE INVERT ELEVATION (OR BOTTOM OF BAFFLE) TO THE BOTTOM OF THE STRUCTURE. IN ADDITION, A TWENTY FOUR INCH (24") DIAMETER OPEN SUMP, FILLED WITH WASHED GRADE ROCK, NO LARGER THAN ONE AND ONE HALF INCHES (1 1/2") SHALL BE PLACED IN THE BASE OF THE STRUCTURE.
- DRAINAGE STRUCTURES SHALL BE CONSTRUCTED USING U.S. PRECAST (USP) U.S. FOUNDRY (USF) OR FLORIDA DEPARTMENT OF TRANSPORTATION STANDARD (FDOT) PRODUCTS AS SPECIFIED OR APPROVED EQUAL. ALL STORM DRAINAGE STRUCTURES MUST COMPLY WITH JURISDICTIONAL AGENCY DETAILS AND REGULATIONS.
- ROOF DRAIN CONNECTIONS TO DRAINAGE PIPE SHALL BE AS FOLLOWS:
 - FOR ADS N-12 CORRUGATED POLYETHYLENE DRAINAGE PIPE USE ADS DUAL WALL FABRICATED REDUCING SADDLE TEE 4"-24" DIAMETER
 - FOR RCP DRAINAGE PIPE MAKE CONNECTION FDOT STANDARD 430-001, CONCRETE COLLAR FOR JOINING MAINLINE PIPE AND STUB PIPE DETAIL
 - NOTIFY CONSULTANT FOR CONNECTION METHOD TO STEEL PIPE.
- STORM DRAIN PIPE SHALL BE AS FOLLOWS:
 - RCP CLASS III PER ASTM C-76
 - ALUMINIZED STEEL TYPE 2 ULTRA FLO
 - 48" AND SMALLER SHALL BE 3/4" X 3/4" X 7-1/2" CORRUGATION
 - 16 GA WITH A MINIMUM THICKNESS OF 0.064"
 - 54" AND LARGER SHALL BE 3/4" X 3/4" X 7-1/2" CORRUGATION
 - 14 GA WITH A MINIMUM THICKNESS OF 0.079"
 - CORRUGATED POLYETHYLENE PIPE PER AASHTO M294
 - JOINTS SHALL BE WATER TIGHT
 - ANY STORM PIPE USED MUST BE APPROVED BY LOCAL AUTHORITIES. CONTRACTOR SHALL SELECT THE MOST ECONOMICAL PRODUCT.
- CONTRACTOR SHALL CLEAN ALL PROPOSED DRAINAGE STRUCTURES AND PIPES UPON COMPLETION OF CONSTRUCTION.
- ALL DRAINAGE STRUCTURES SHALL CONFORM TO THE LATEST FDOT INDEX STANDARDS. CONTRACTOR SHALL SUBMIT SHOP DRAWINGS TO THE ENGINEER PRIOR TO COMMENCEMENT OF CONSTRUCTION.

DRAINAGE STRUCTURE TABLE					
STRUCTURE	STRUCTURE TYPE	RIM ELEV.	INVERT ELEVATION	STRUCTURE DETAILS	
ST-01	MANHOLE	8.34'	(18") 4.00 (E)	5'-0" MIN DIA TYPE J STRUCTURE W/ COVER FOR MANHOLES PER CITY OF POMPANO BEACH DETAIL 409-1 W/ THE WORD "STORM"	
ST-02	MANHOLE	9.08'	(18") 4.00 (W) (18") 4.00 (E) (18") 4.00 (N) (18") 4.00 (S)	5'-0" MIN DIA TYPE J STRUCTURE W/ COVER FOR MANHOLES PER CITY OF POMPANO BEACH DETAIL 409-1 W/ THE WORD "STORM"	
ST-03	MANHOLE	9.08'	(18") 4.00 (W) (18") 4.00 (E) (18") 4.00 (N) (18") 4.00 (S)	5'-0" MIN DIA TYPE J STRUCTURE W/ COVER FOR MANHOLES PER CITY OF POMPANO BEACH DETAIL 409-1 W/ THE WORD "STORM"	
ST-04	MANHOLE	9.16'	(18") 4.00 (W)	5'-0" MIN DIA TYPE J STRUCTURE W/ COVER FOR MANHOLES PER CITY OF POMPANO BEACH DETAIL 409-1 W/ THE WORD "STORM"	
ST-05	CURB INLET W/ PRB (N)	8.75'	(18") 4.00 (N)	4'-0" MIN DIA TYPE J CATCH BASIN W/ USF #5130-6168 FRAME & GRATE	
ST-06	CURB INLET W/ PRB (S)	8.75'	(18") 4.00 (S)	4'-0" MIN DIA TYPE J CATCH BASIN W/ USF #5130-6168 FRAME & GRATE	
ST-07	CURB INLET W/ PRB (N)	8.75'	(18") 4.00 (N)	4'-0" MIN DIA TYPE J CATCH BASIN W/ USF #5130-6168 FRAME & GRATE	
ST-08	CURB INLET W/ PRB (S)	8.75'	(18") 4.00 (S)	4'-0" MIN DIA TYPE J CATCH BASIN W/ USF #5130-6168 FRAME & GRATE	

Teresa Villalon-Camacho State of Florida, Professional Engineer,
License No. 94893

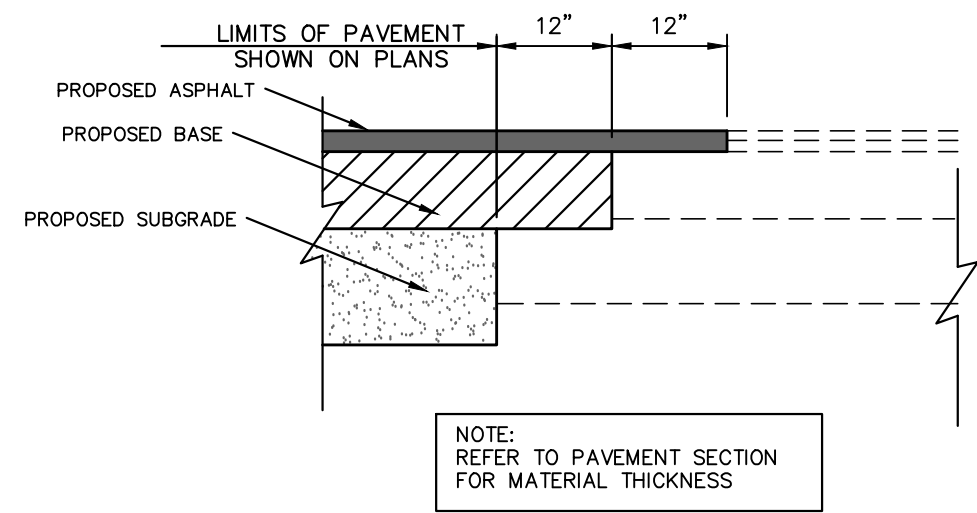
This item has been digitally signed and sealed by Teresa Villalon-Camacho on the date indicated here.

Signature must be verified on any electronic copies.

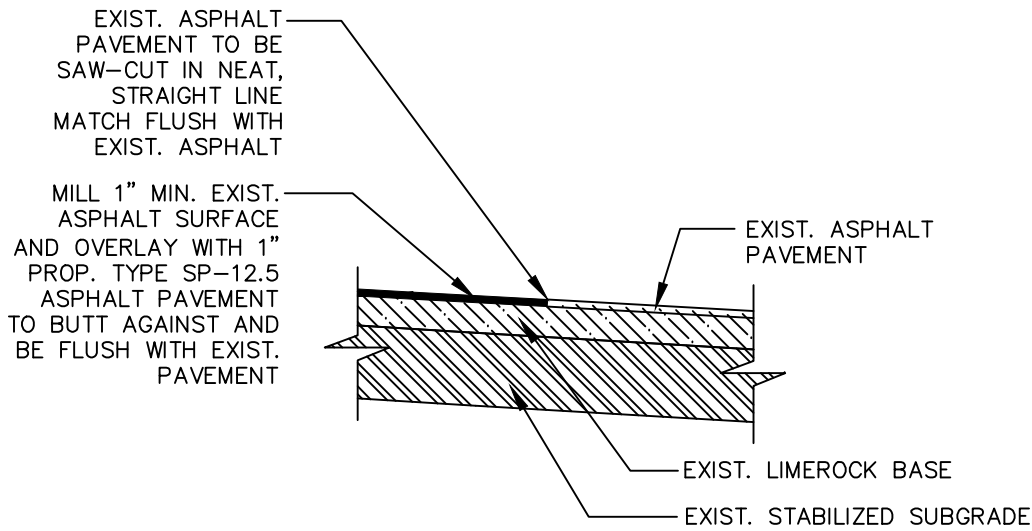


- NOTES:
- MATERIALS AND CONSTRUCTION IN ACCORDANCE WITH FDOT STANDARD 443-001.
 - FILTER FABRIC ALL FOUR (4) SIDES OF EXFILTRATION TRENCH WITH 24" OVERLAP AT TOP OF TRENCH.
 - SLOTS OR PERFORATIONS SHALL BE CONSTRUCTED BY THE PIPE MANUFACTURER AND NOT CUT AT THE PROJECT SITE. SLOTS OR PERFORATIONS SHALL MEET FDOT SPECIFICATIONS.
 - REFER TO DRAINAGE PLANS FOR EXFILTRATION TRENCH LOCATION AND WIDTHS.
 - ROCK TRENCH DIMENSIONS PROVIDED ABOVE ARE MINIMUM DIMENSIONS BASED ON THE LOWEST RIM ELEVATION FOR THE DRAINAGE SYSTEM.
 - AT LOCATIONS WHERE FINISHED GRADES ARE HIGHER THAN WHAT IS SHOWN ABOVE, THE TOP OF TRENCH SHALL BE RAISED.

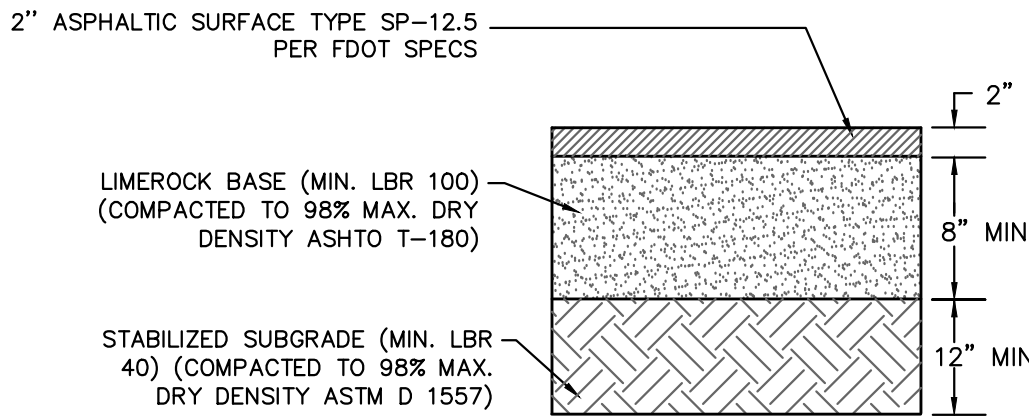
1 TYPICAL EXFILTRATION TRENCH DETAIL (ON-SITE)
N.T.S.



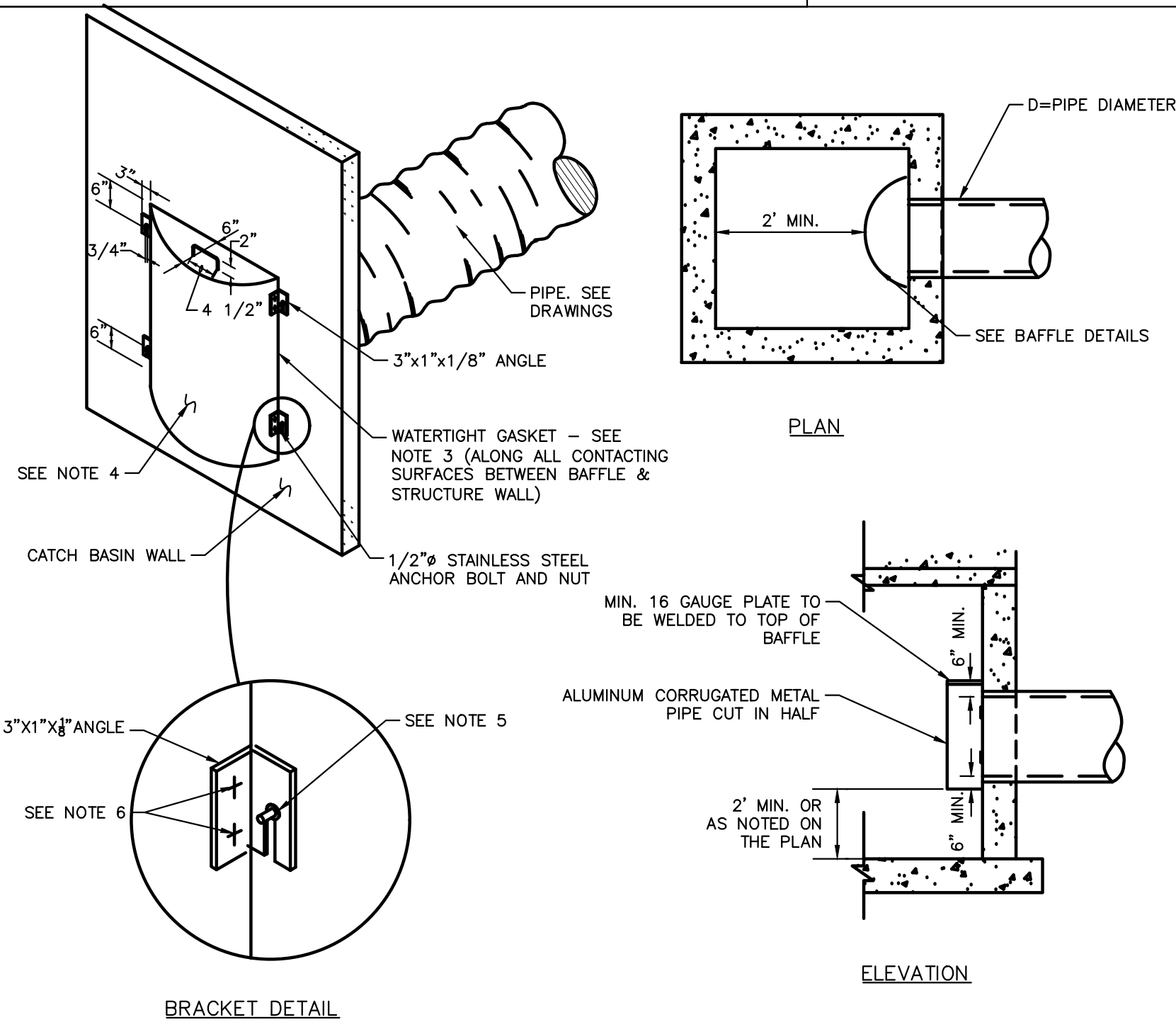
2 PAVEMENT MATCHING DETAIL
N.T.S.



3 MILLING AND RESURFACING
N.T.S.



4 ASPHALTIC CONCRETE PAVEMENT SECTION
N.T.S.



5 BAFFLE DETAIL
N.T.S.

TABLE 1	
DIAMETER (IN)	BAFFLE DIA. (IN)
10	15
15	24
18	30
24	36
30	48
36	54

- NOTES:
- CONTRACTOR TO VERIFY THAT BAFFLE WILL FIT STRUCTURE I.D.
 - DEBRIS BAFFLE REQUIRED AT CATCH BASINS CONNECTED DIRECTLY TO PROPOSED DRAIN FIELD.
 - PROVIDE NEOPRENE GASKET TO SIDES AND TOP.
 - POLLUTION RETARDANT BAFFLE (PRB) SHALL BE A MINIMUM OF 2' FROM OPPOSITE WALL OF STRUCTURE, FROM OBSTRUCTION, OR ANOTHER PRB
 - SECTION OF ALUMINUM CORRUGATED METAL PIPE CUT IN HALF. BAFFLE DIAMETER TO BE AS PER TABLE 1.
 - 3/4" GALVANIZED LAG BOLT IN LEAD SHIELD.
 - WELD OR 2-1/4" THRU BOLTS.

PAVING, GRADING
AND DRAINAGE
DETAILS

ANIE ADDERLY GILLIS
PARKING LOT
PREPARED FOR
CITY OF POMPANO BEACH

SHEET NUMBER
CS.10

DRG
0000033

Kimley»Horn
© 2024 KIMLEY-HORN AND ASSOCIATES, INC.
8209 KETTER ROAD, SUITE 200, POMPANO BEACH, FL 33024
PHONE: 954-535-5100 FAX: 954-739-2247
WWW.KIMLEY-HORN.COM REGISTRY No. 696

LICENSED PROFESSIONAL
TERESA VILLALON
CAMACHO, P.E.
FL LICENSE NUMBER
94893

KHA PROJECT
04095115
DATE
JULY 2025
SCALE AS SHOWN
DESIGNED BY
DRAWN BY
CHECKED BY

REVISIONS
No.
DATE
BY